











Balkans Reference  
Lambert Conformal Conic projection  
Standard parallels: 38° N, 47° N  
1:1,700,000

Use restrictions: None. This relief created by  
the CIA is in the public domain.

[www.shadedreliefarchive.com](http://www.shadedreliefarchive.com)



## This is a detailed black and white topographical map of the Hawaiian Islands. The map is oriented with the Hawaiian Islands archipelago running diagonally from the top left to the bottom right. The islands are depicted with intricate shading to represent elevation and topography. The surrounding ocean is shown in a lighter shade, with some smaller islands and reefs visible. The map is framed by a simple border.

[www.shadedreliefarchive.com](http://www.shadedreliefarchive.com)









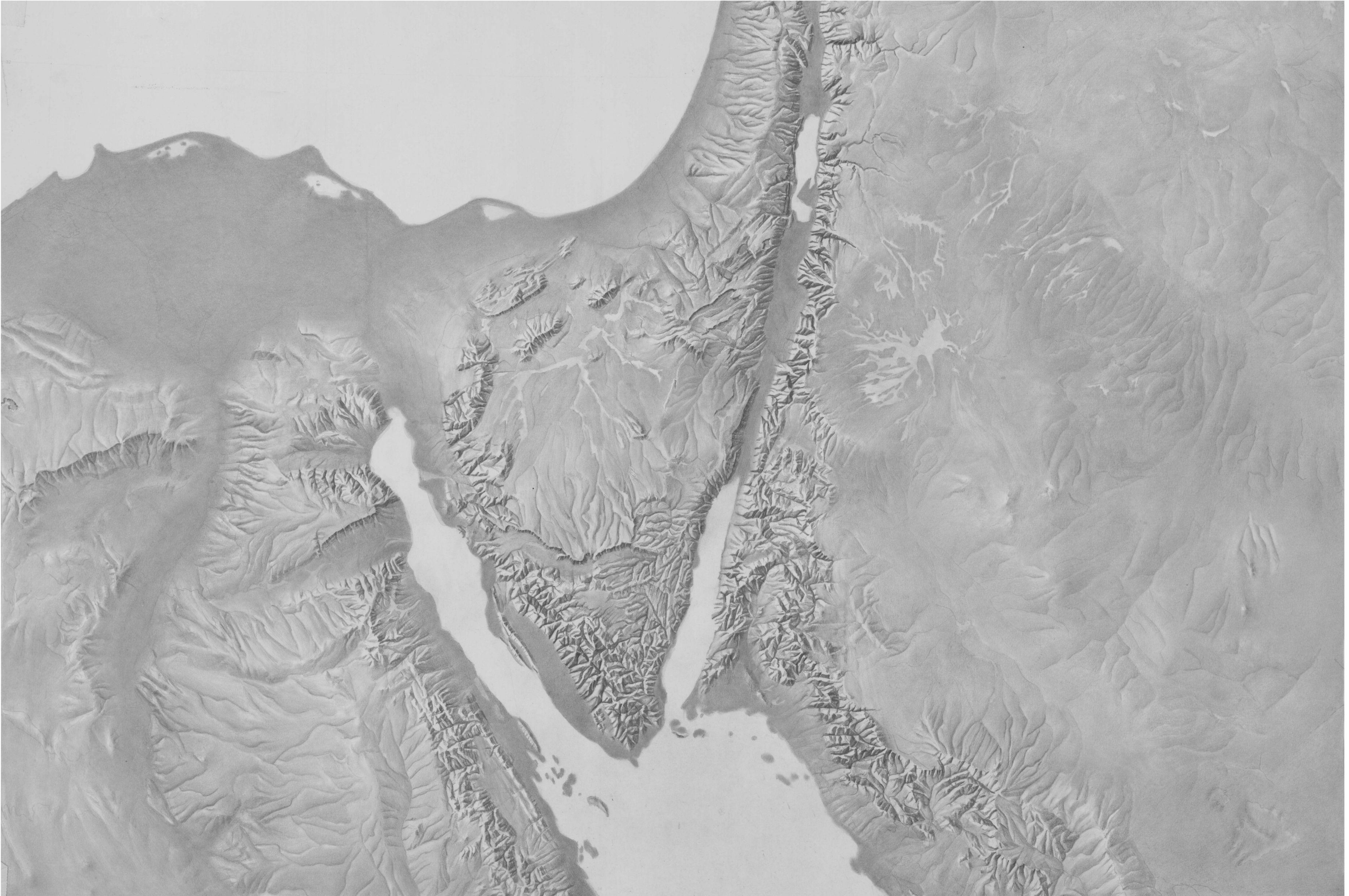


Egypt Regional  
Lambert Conformal Conic projection  
Standard parallels: 24°N, 29°N  
1:3,275,000

Use restrictions: None. This relief created by  
the CIA is in the public domain.

[www.shadedreliefarchive.com](http://www.shadedreliefarchive.com)

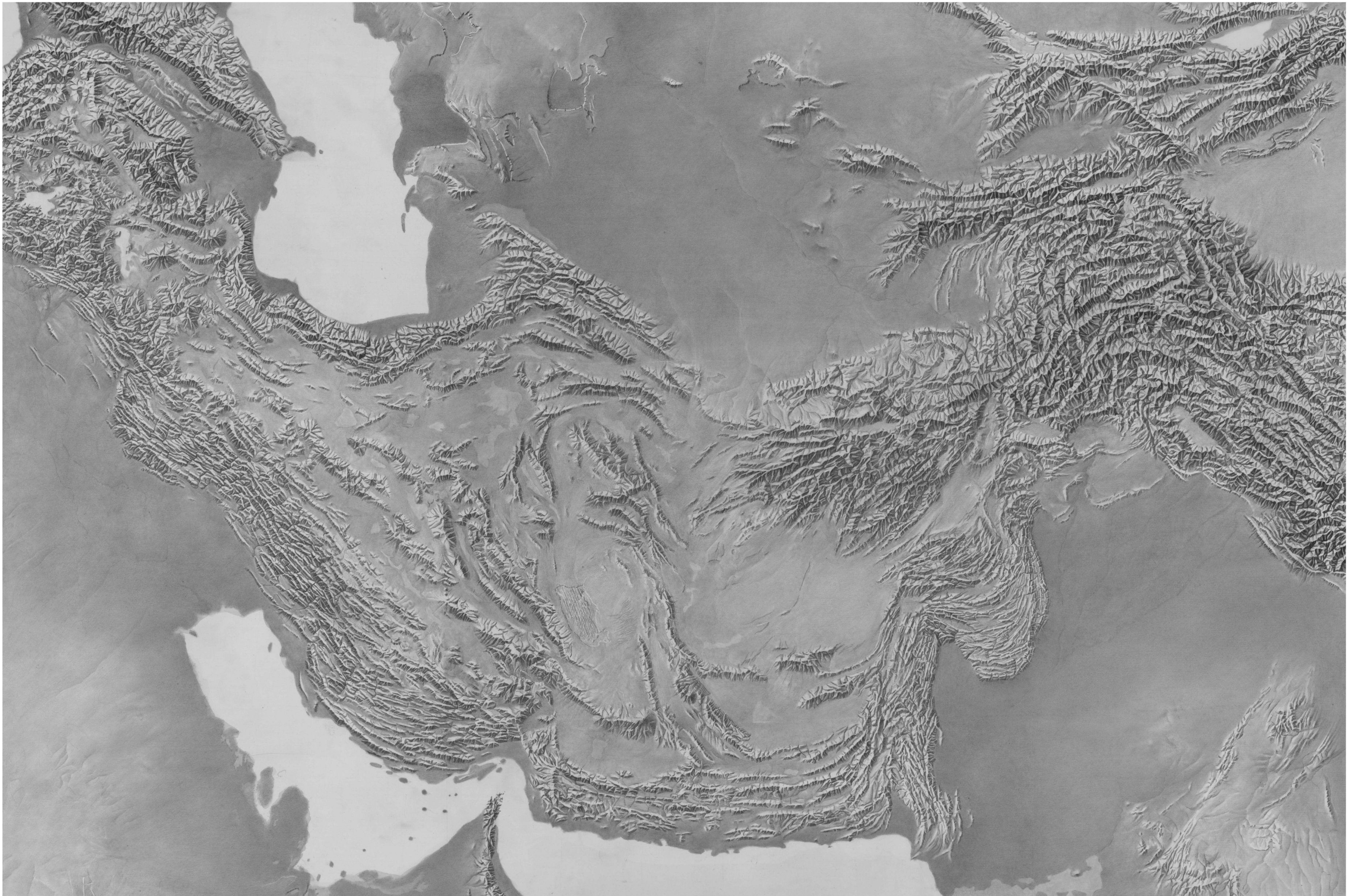
































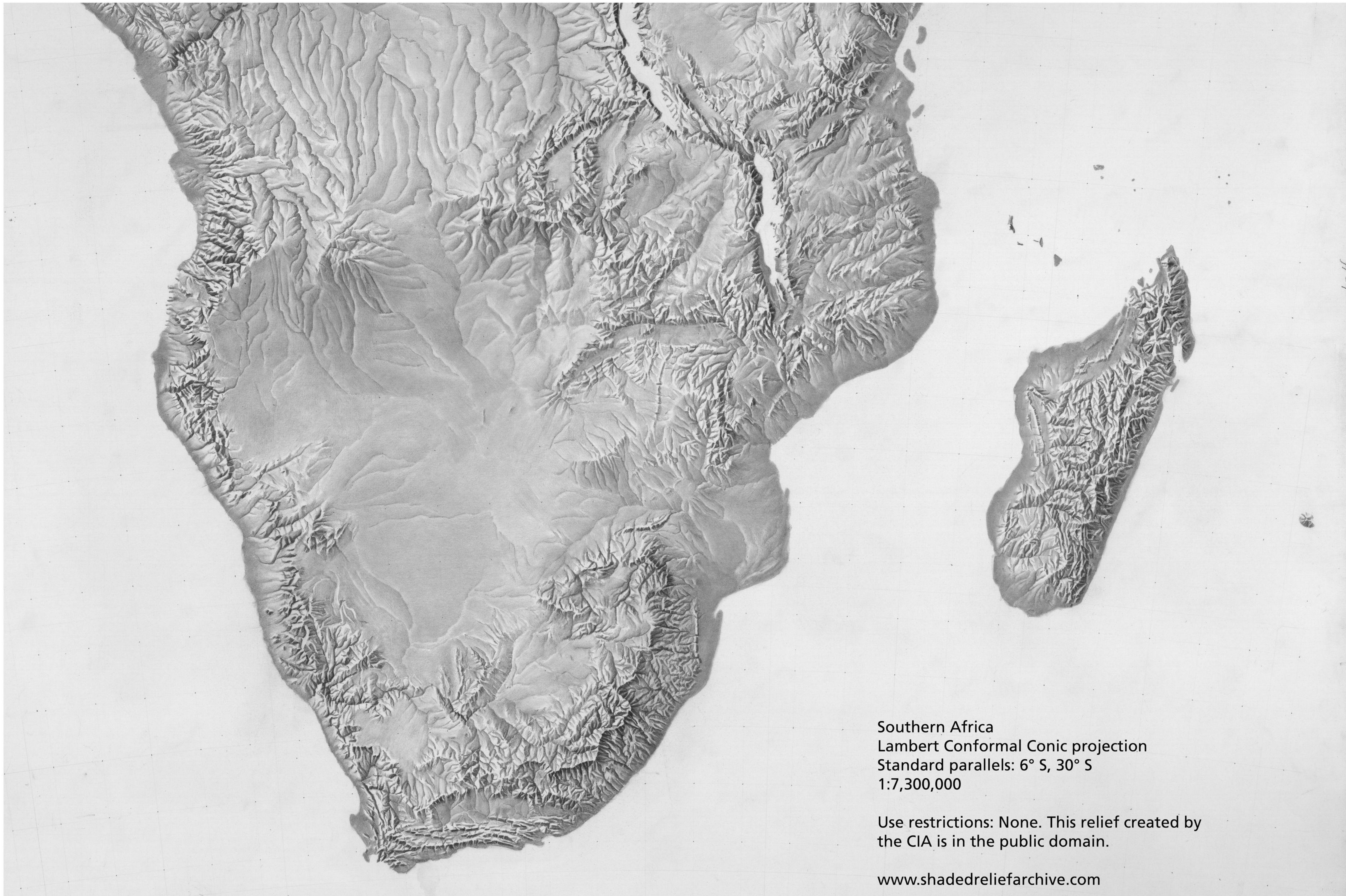


West Africa Reference  
Lambert Conformal Conic projection  
Standard parallels: 8° N, 32° N  
1:3,000,000

Use restrictions: None. This relief created by  
the CIA is in the public domain.

[www.shadedreliefarchive.com](http://www.shadedreliefarchive.com)



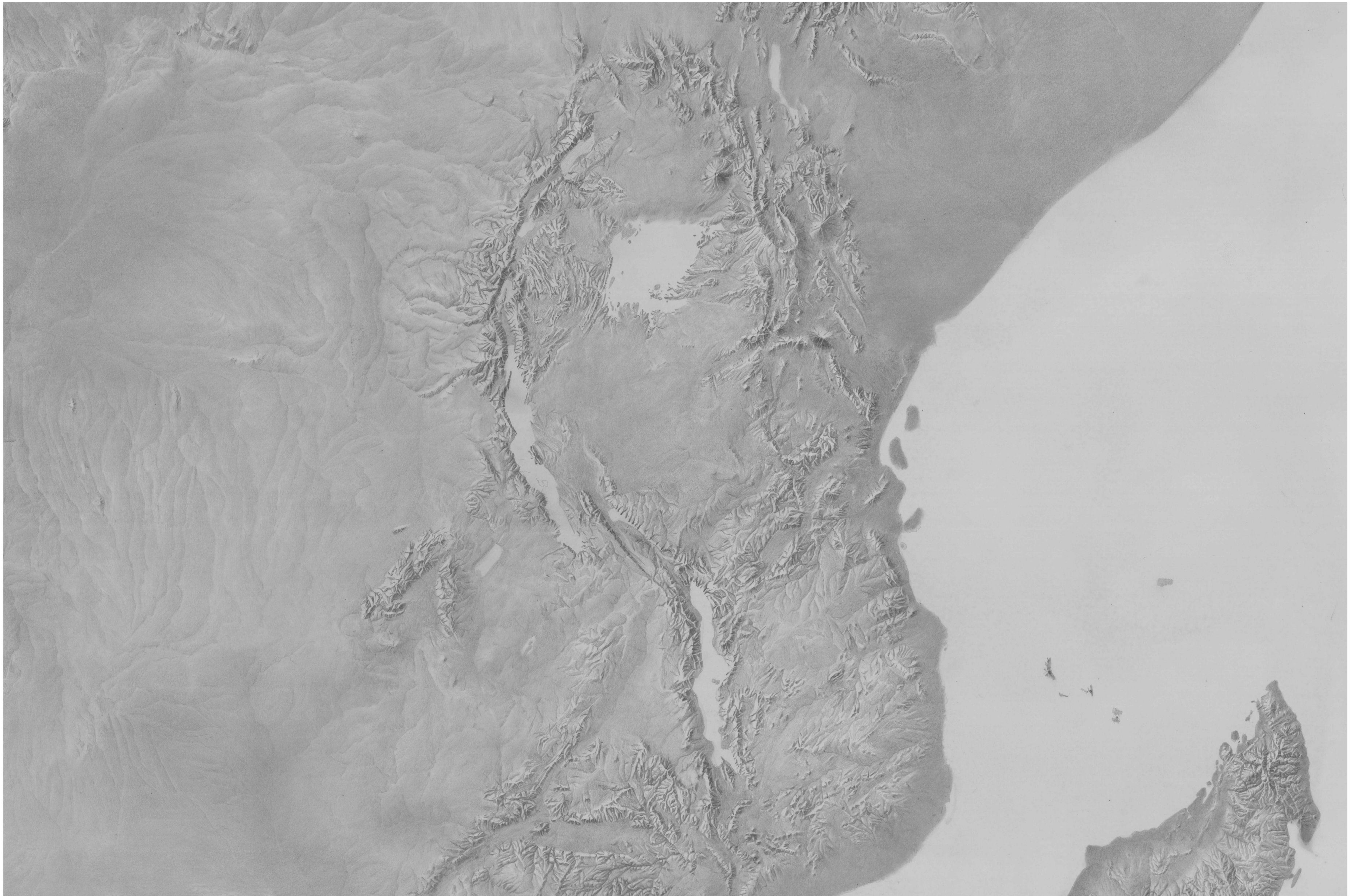


Southern Africa  
Lambert Conformal Conic projection  
Standard parallels: 6° S, 30° S  
1:7,300,000

Use restrictions: None. This relief created by  
the CIA is in the public domain.

[www.shadedreliefarchive.com](http://www.shadedreliefarchive.com)

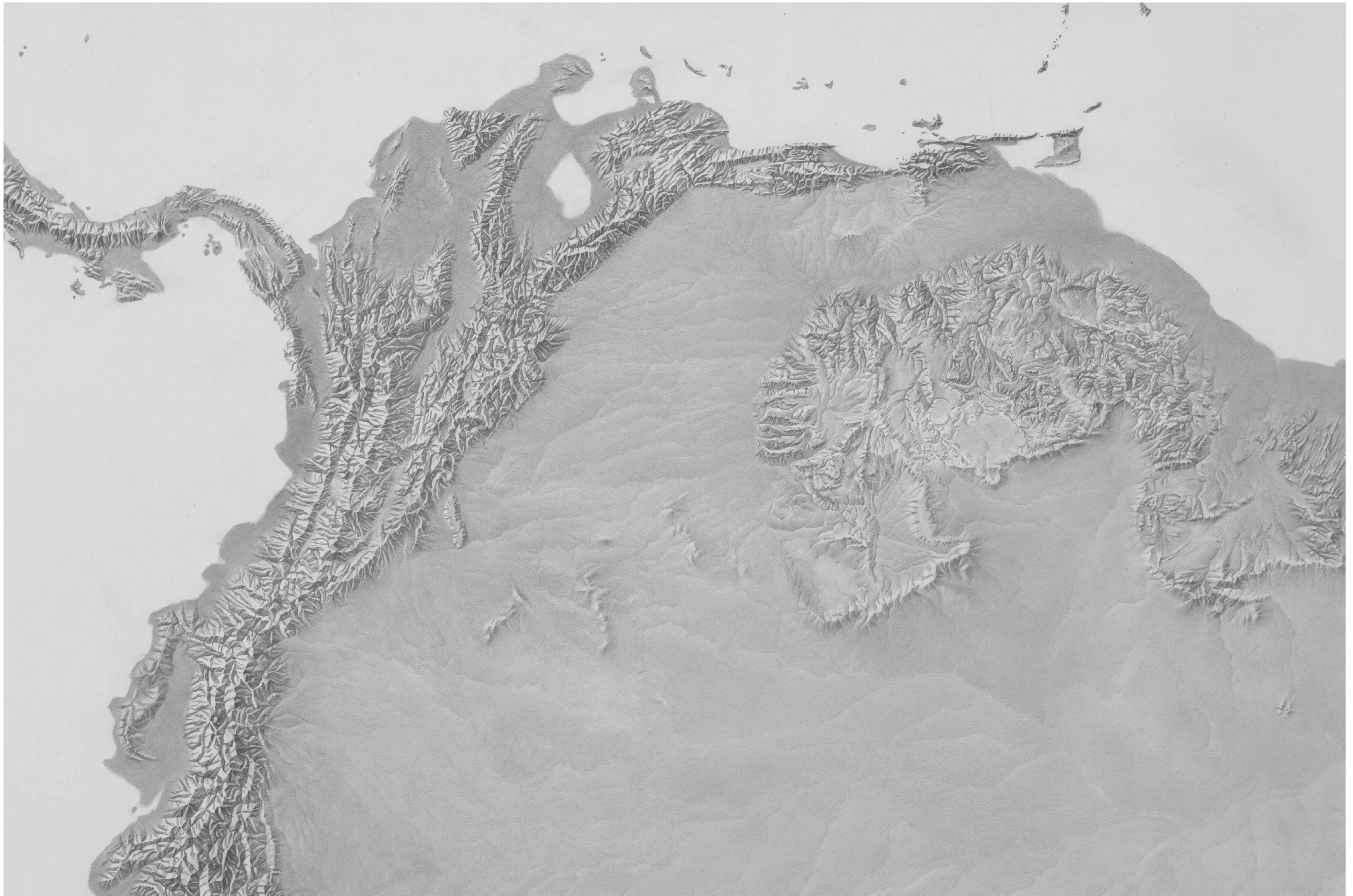






















USE PL. 6 AS A MASK

Chile-Peru Border Region  
Lambert Conformal Conic projection  
Standard parallels: 20°S, 17°S ?  
1:750,000







Albers Equal-Area Conic Projection  
Standard parallels: 55 N and 65 N  
Central Meridian: 154 W  
Latitude of projection origin: 50 N  
NAD83 Datum

50N, 175E

70N, 175W

65N, 120W

55N, 135W

Relief artist: Dorothy Nelson, late 1970s

Original owner: RR Donnelley and Sons Cartographic Services (defunct).  
Former Donnelley employee, Herwig G. Schutzler, donated the relief to  
the US Library of Congress.

Use restrictions: None. This relief is in the public domain. Space permitting on  
your map, please cite Dorothy Nelson as the relief source.

Relief modified April 2010 by Tom Patterson to fit 1:10 million  
Natural Earth vectors: [www.naturalearthdata.com](http://www.naturalearthdata.com).

Because the original projection was unknown, Patterson manually transformed  
the art in Photoshop to fit the common Alaska Albers projection.



Shaded Relief Archive



Albers Equal-Area Conic Projection  
Standard parallels: 29.5 N and 45.5 N  
Central Meridian: 96 W  
Latitude of projection origin: 23 N  
NAD83 Datum

Relief artist: Richard Edes Harrison, 1969  
Published in: The National Atlas of the United States of America, 1970, by the USGS  
Use restrictions: None. This relief, acquired as a photographic print from the USGS in 1987, is in the public domain. Space permitting on your map, please cite Richard Edes Harrison as the relief source.

Relief modified March 2010 by Tom Patterson to fit 1:10 million  
Natural Earth vectors: [www.naturalearthdata.com](http://www.naturalearthdata.com).  
Patterson's adjustments included nudging mountains and river valleys, balancing tones, infilling masked lakes with flat tone, redrawing a few small areas, and clipping to the Natural Earth vector coastline.



Polyconic Projection (based on USGS 1:24,000 topographic maps)  
American Samoa 1962 Datum  
The relief art is not georeferenced.

Relief artist: Michael Wood, 1980, University of Aberdeen, UK

Published in: NOAA Coastal Zone Management Atlas of American Samoa, 1981.  
Produced by University of Hawaii, Department of Geography.  
Dr. Everett Wingert, Director.

Use restrictions: None. This relief is in the public domain. Space permitting on  
your map, cite the University of Hawaii, Department of Geography as the  
relief source.

## Tutuila

## Ofu-Olosega

## Ta'ū

