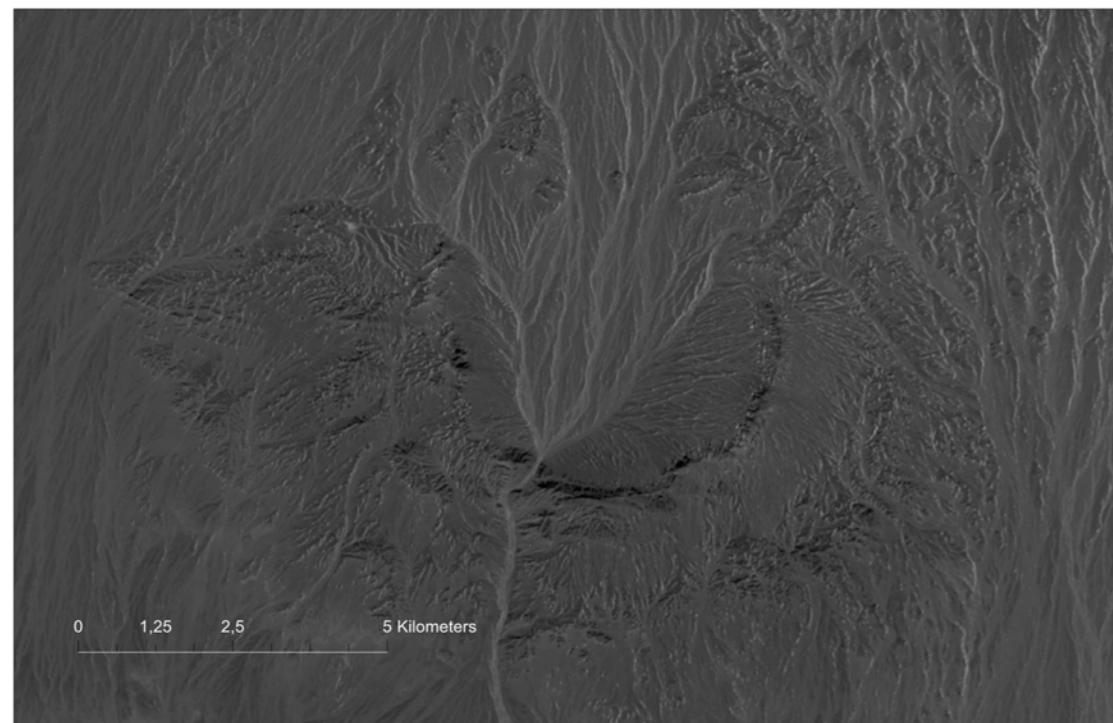


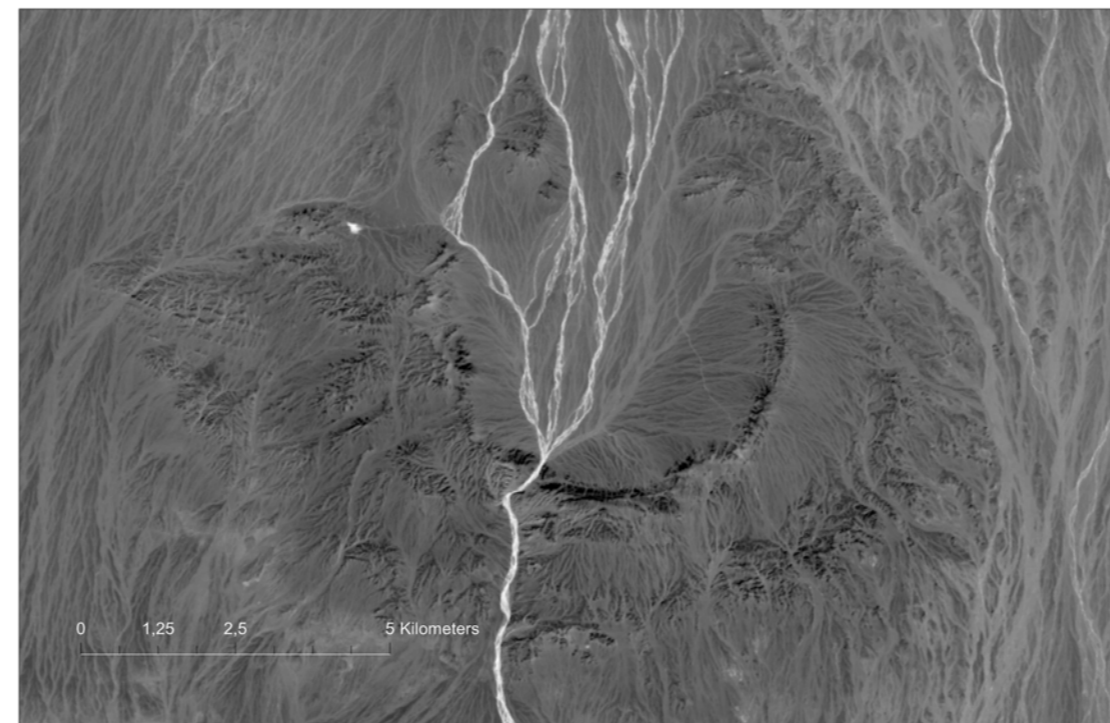
# An example of visualizing data from a multispectral satellite image on the Tsenkher meteorite crater (Nomin Tsenkher uul), Govi Altai

A series of images showing seasonal changes in an area of the surface using data from Landsat imagery for the period from 2015 to 2023. Canal B8 (Panchromatic - PAN). Scale 1:10,000

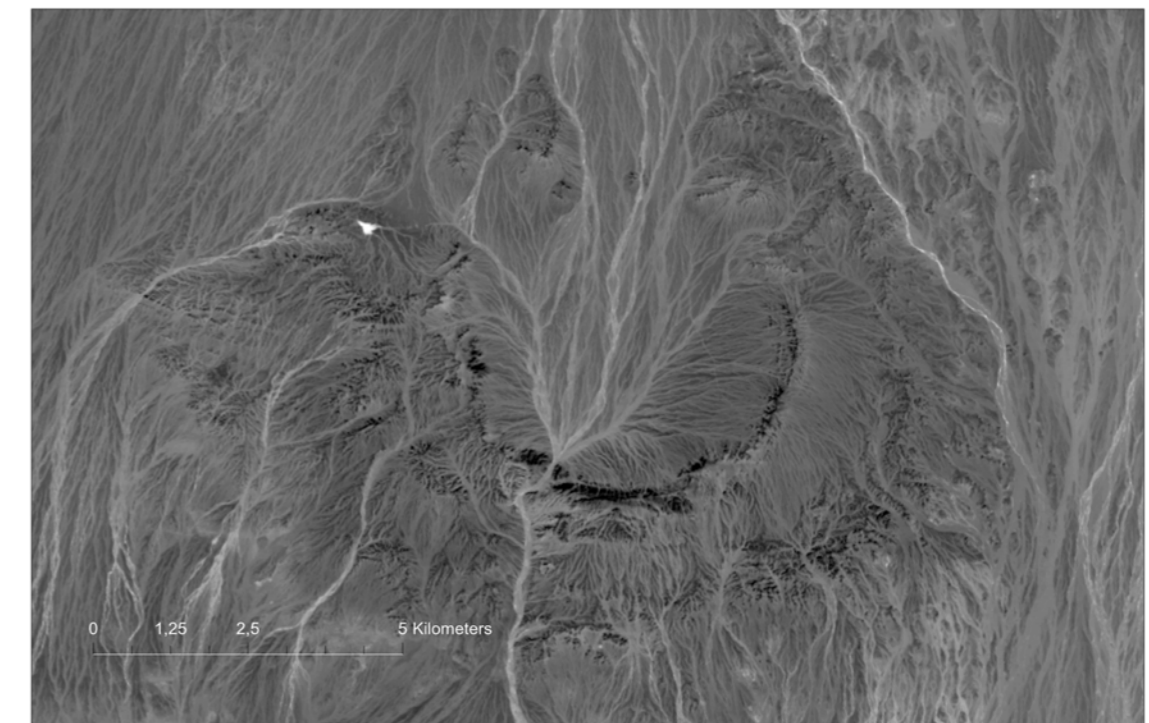
Classroom resources / visualization of multispectral image data / satellite images



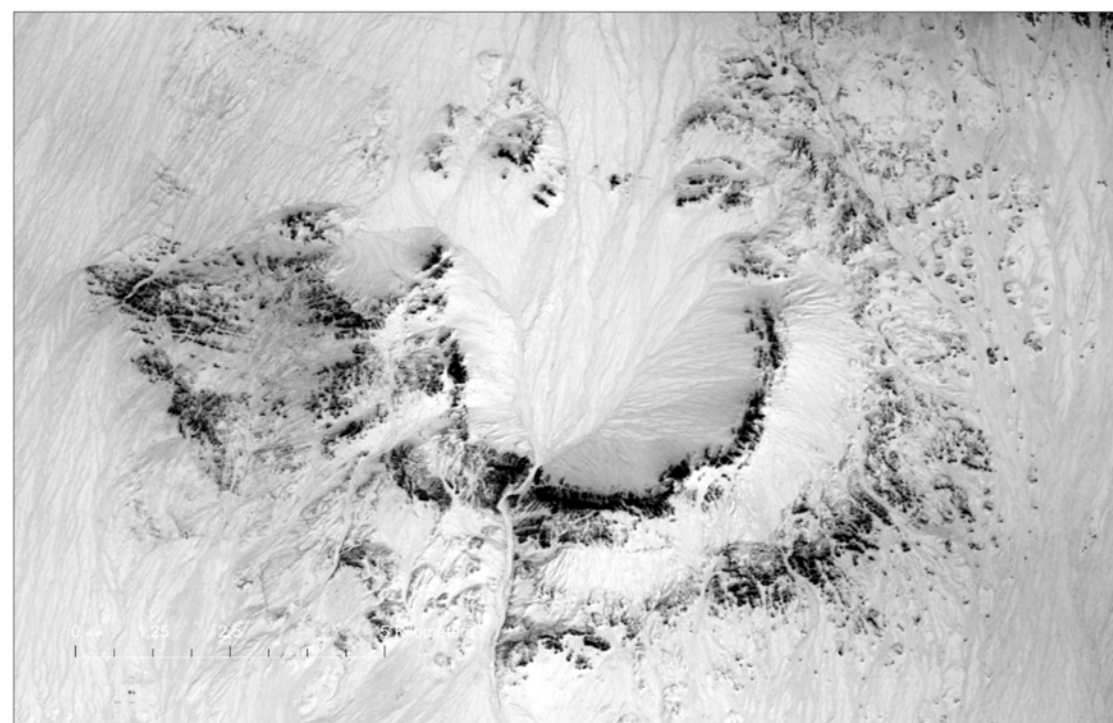
1. 2015-12-16, 04:07:01 / LC08\_L1TP\_135030\_20151216\_20200908\_02\_T1



2. 2023-06-28, 04:12:27 / LC09\_L1TP\_136030\_20230628\_20230628\_02\_T1



3. 2023-11-19, 04:13:17 / LC09\_L1TP\_136030\_20231119\_20231119\_02\_T1



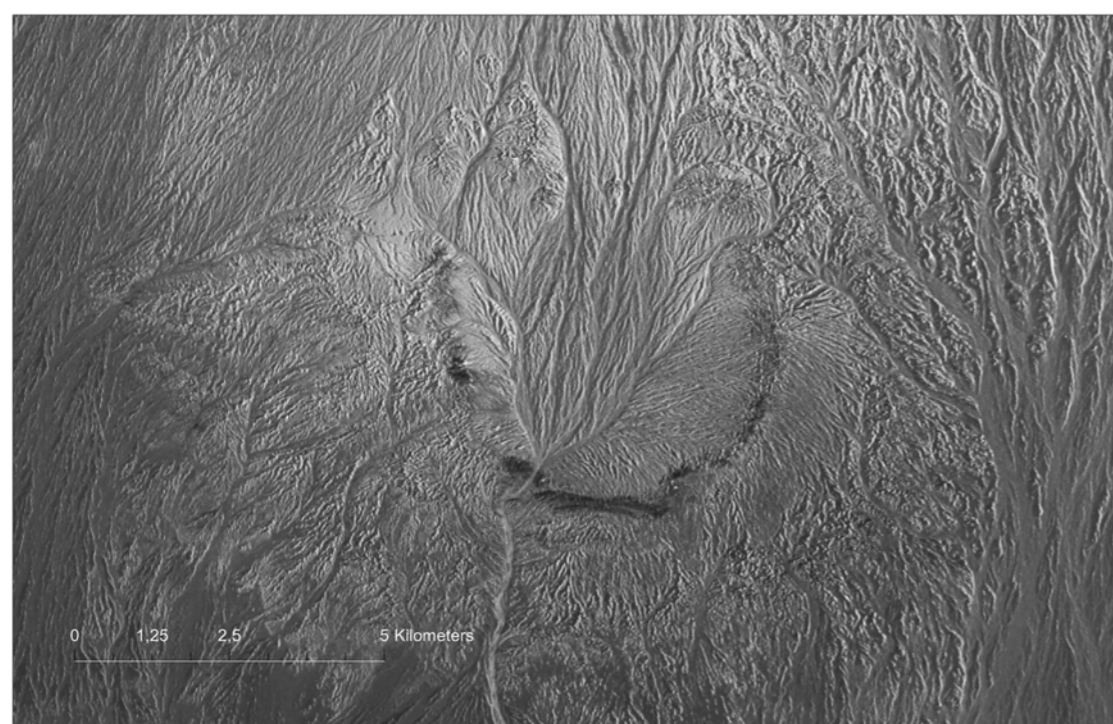
4. 2021-11-14, 04:07:14 / LC08\_L1TP\_135030\_20211114\_20211125\_02\_T1



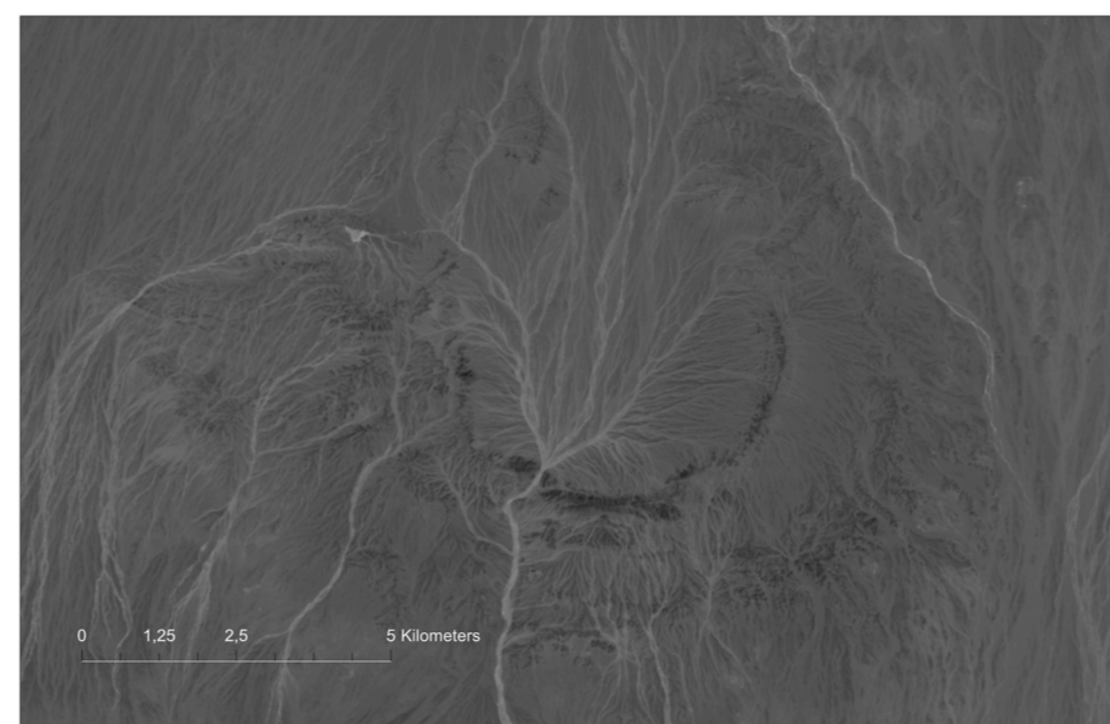
5. 2022-01-16, 04:13:18 / LC09\_L1TP\_136030\_20220116\_20230501\_02\_T1



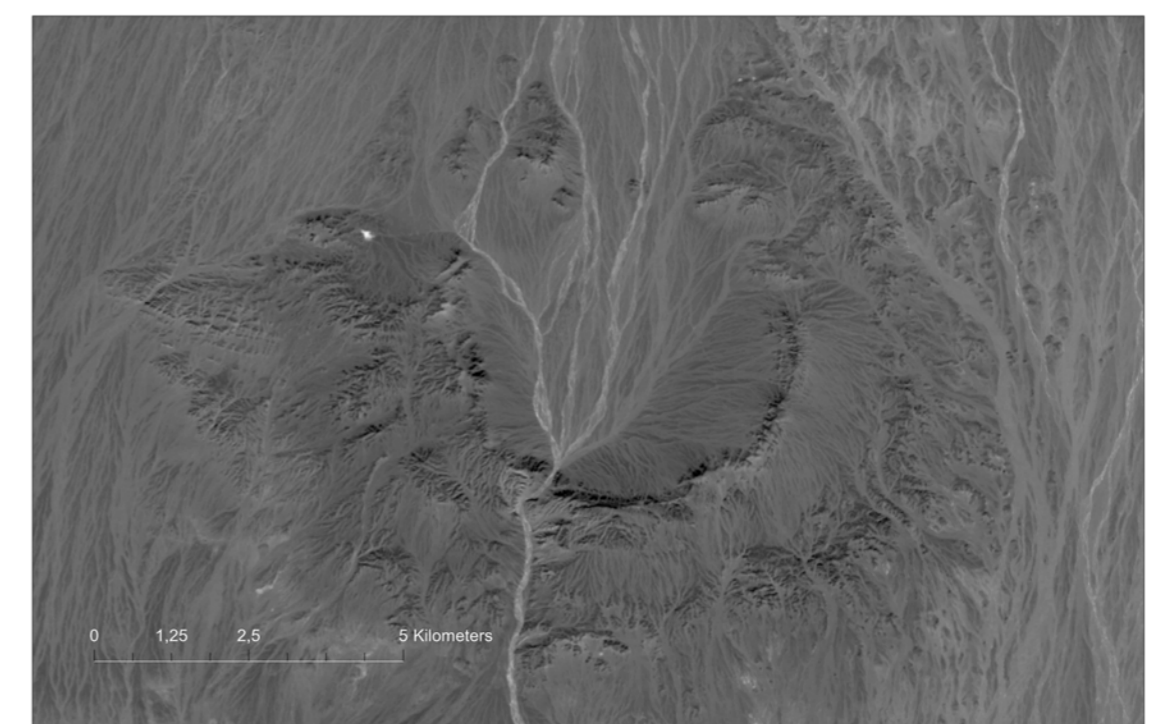
6. 2022-01-24, 04:13:14 / LC08\_L1TP\_136030\_20220124\_20220128\_02\_T1



7. 2019-10-24, 04:07:17 / LC08\_L1TP\_135030\_20191024\_20200825\_02\_T1



8. 2020-02-29, 04:06:51 / LC08\_L1TP\_135030\_20200229\_20200822\_02\_T1

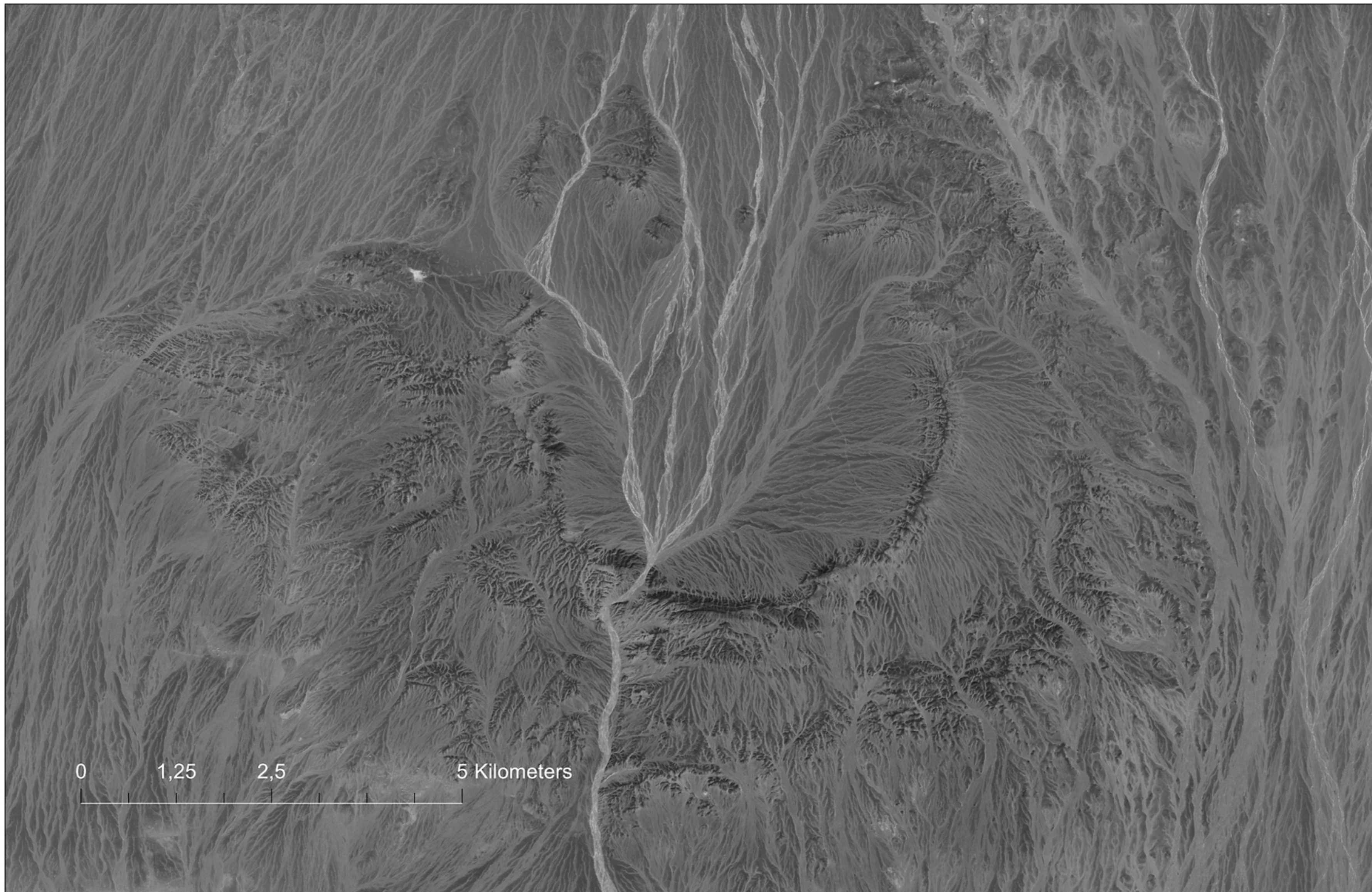


9. 2022-03-30, 04:06:50 / LC09\_L1TP\_135030\_20220330\_20230423\_02\_T1

# An example of visualizing data from a multispectral satellite image on the Tsenkher meteorite crater (Nomin Tsenkher uul), Gobi Altai

The image obtained from the data of many images. Base layer - World Imagery, ESRI, color grey, version 2023. Scale 1:10,000

Classroom resources / visualization of multispectral image data / base layers



Multispectral images that include data outside the human-visible spectrum provide more complete information about the Earth's surface. GIS application tools provide researchers with ample opportunities for their interpretation, visualization, creating a more realistic image of the landscape and maps.

ArcGIS Desktop v10.3.0. Esri Inc., Abdulmyanov S.N.